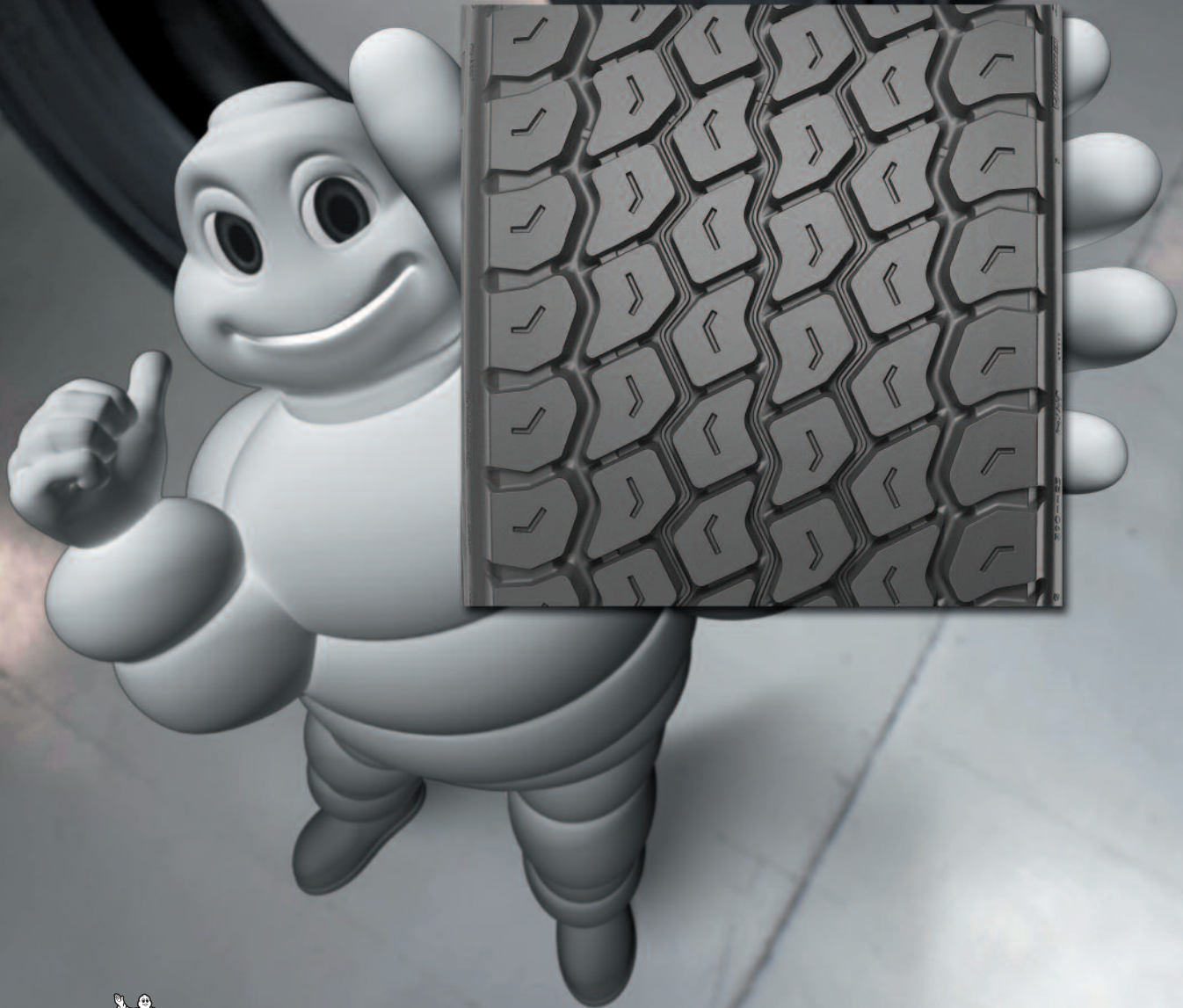


MICHELIN® Retread Technologies Quick Reference Tread Guide

January 2010



 RETREAD TECHNOLOGIES



MICHELIN® RETREADS QUICK REFERENCE TREAD GUIDE

Product Availability (Tread Depth in Shaded Boxes)

STANDARD SIZES

Tread Size	140	150	160	170	180	190	200	210	220	230	240	250	260	270	280	
Size \ # DIE			162\#4	168\#5	177\#6	194\#7	203\#8	211\#8.5N	219\#9	225\#9.5	232\#10	238\#10.5	252\#12			
Spread Axle Sizes ⁽¹⁾						185/225	195/235	205/245	215/255	225/265	245/285					
XDA2® 23 AT*								23	23	23	23					
XDA2® 19 AT*									19	19						
XDA-HT™ High Torque							28	28	28	28	28					
XDA®													25			
XD4®								28	28	28						
XDN®2									27	27	27					
XDN®					17			26	26	26		25				
XDHT® ⁽²⁾					19	23	23	23	23	23	23					
XDC® LL								14	14							
XDC® 22						22	22	22	22	22						
XDC® 18									18	18						
XM+S4®				21	21	21	21	21	21	21						
XDE® M/S				18	18	20	20	22	22	22	26	26				
XDS®								25	25	25		25				
XDU®S									32	32	32	32		32		
XDY®							26	26	26	26	26	26	32	32		
XDY-1™								30	30	30	30	30				
XZA® ⁽²⁾	13	13	13	13	13	15	15	15	15	15		20				
XZE® ⁽²⁾				16	18	18	18	18	18	18						
XZE2™											20	20	20			
XZE® SA						18	18	18	18	18	18 ⁽³⁾					
XZU®S									26	26	26	26		26		
XZY®							18	18	18	18	18	20				
XZY-1™								20	20	20	20	26				
XZY-2™								26	26	26	26	26				
XT-1® AT* ⁽²⁾							12	12	12	12						
XTA®-1 ⁽²⁾						11	11	11	11	11		11				
XTA®											16		16			
XTY® SA							22	22	22							

WIDE BASE AND MICHELIN® X ONE® RETREAD SIZES

Tread Size	290/345 ⁽¹⁾	320/365 ⁽¹⁾	350/395 ⁽¹⁾	375/425 ⁽¹⁾	380	385/435 ⁽¹⁾	390	390/430 ⁽¹⁾	400
XTE2® Wide Base	20								
XZA® Wide Base	19	19	19						
XZH™ Wide Base			20						
XZL™ Wide Base			30						
XZY® Wide Base	20	20							
X One® XDA®					24		24		
X One® XDA-HT™							26		26
X One® XTA®				13					
X One® XTE®				16		16			
X One® XZU®S								23	

For up-to-date product information please visit www.michelintruck.com

* AT designated Advanced Technology™ compounds for fuel savings.

(1) Tread widths with two measurements have wings. The first number is tread base width in mm. The second number is the overall width, wing tip to tip.

(2) Available siped. Consult Michelin Retread Technologies dealers for availability.

(3) Available 1st quarter 2010.

CUSTOM MOLD™ TREAD GUIDE

Size	11R22.5	11R24.5	275/80R22.5	275/80R24.5	425/65R22.5	445/50R22.5
XDA2® AT	23	23	23	23	NA	NA
XD4®	NA	NA	28	28	NA	NA
XDN®	25	NA	NA	NA	NA	NA
XDHT®	23	23	23	23	NA	NA
XDS®	25	25	NA	NA	NA	NA
XZA®	15	15	15	15	NA	NA
XZE®	18	18	18	18	NA	NA
XT-1® AT	12	12	12	12	NA	NA
XTA®-1	11	11	11	11	NA	NA
XZY® Wide Base	NA	NA	NA	NA	20	NA
X One® XTA®	NA	NA	NA	NA	NA	13
X One® XTE®	NA	NA	NA	NA	NA	16

Please contact your local MICHELIN representative or MRTI franchise locations for size and tread design availability.

CASING FITMENT GUIDE

THIS DOCUMENT IS DESIGNED FOR USE AS A SALES TOOL ONLY AND SHOULD NOT BE USED AS OR CONSIDERED TO BE A TECHNICAL RECOMMENDATION. MRT plant will use the normal MRT production processes, which is to measure the width of the crown and apply the widest tread that will fit to most closely meet the original tire architecture, to determine the final tread size needed for each individual tire. This publication should be used as a general guide during the sales process to help select the MRT tread width that could optimally be used for a particular casing size.

Tread Width											
140	150	160	170	180	190	200	210	220		230	240
2	3/152	4/162	5/168	6/177	7/194	8/203	8.5N/211	9/219	9.5/225	10/232	10.5/238
Standard											
7.50R16	7.50R16	7.50R16	8.75R16.5	8.75R16.5	8.75R16.5	10R17.5	10.00R20	10.00R20	10.00R20	12.00R20	11.00R20
7.50R17	7.50R17	8.75R16.5	9R17.5	9.50R16.5	9.50R16.5	11R17.5	10.00R22	11.00R20	10.00R22	11.00R22	12.00R20
9R17.5	9R17.5	9.50R16.5	10R17.5	9.50R17.5	10R17.5	9.00R20	10R22.5	10R22.5	11R22.5	11R22.5	11.00R22
8R19.5	8R19.5	9R17.5	11R17.5	9R17.5	11R17.5	10.00R20	11R22.5	11R22.5	12R22.5	12R22.5	11R22.5
9R22.5	9R22.5	10R17.5	8R19.5	10R17.5	8R19.5	10R22.5	12R22.5	12R22.5	11.00R24	11.00R24	12R22.5
		8R19.5	8.25R20	11R17.5	9.00R20	11.00R24	13R22.5	13R22.5	12.00R24	12.00R24	12/80R22.5
		7.50R20	9R22.5	8R19.5	10.00R20	12.00R24	11.00R24	11.00R24	11R24.5	11R24.5	11.00R24
		9R22.5	10R22.5	7.50R20	9R22.5		12.00R24	12.00R24	12R24.5	12R24.5	12.00R24
				8.25R20	10R22.5		11R24.5	11R24.5			11R24.5
				9R22.5			12R24.5	12R24.5			12R24.5
				10R22.5							
Low Profile											
215/85R16	215/85R16	215/85R16	215/85R16	215/85R16	215/85R16	225/75R16	225/75R16	235/85R16	285/70R19.5	275/80R22.5	275/80R22.5
		225/75R16	225/75R16	225/75R16	225/75R16	235/85R16	235/85R16	235/75R17.5	275/80R22.5	275/80R24.5	295/80R22.5
		235/85R16	235/85R16	245/75R16	235/85R16	245/75R16	245/75R16	245/75R17.5	295/80R22.5		305/70R22.5
		215/75R17.5	245/75R16.5	235/85R16	245/75R16	215/75R17.5	235/75R17.5	245/70R19.5	275/80R24.5		315/80R22.5
		235/75R17.5	215/75R17.5	245/75R16.5	245/75R16.5	235/75R17.5	245/75R17.5	265/70R19.5			275/80R24.5
			235/75R17.5	215/75R17.5	215/75R17.5	245/75R17.5	225/70R19.5	285/70R19.5			
			225/70R19.5	235/75R17.5	235/75R17.5	225/70R19.5	245/70R19.5	255/70R22.5			
			235/80R22.5	225/70R19.5	225/70R19.5	245/70R19.5	265/70R19.5	255/80R22.5			
				245/70R19.5	245/70R19.5	265/70R19.5	285/70R19.5	275/70R22.5			
				235/80R22.5	265/70R19.5	235/80R22.5	235/80R22.5	275/80R22.5			
				255/70R22.5	235/80R22.5	255/70R22.5	255/70R22.5	295/80R22.5			
				255/70R22.5	255/80R22.5	255/80R22.5	275/80R24.5				
				255/80R22.5			275/70R22.5				
							275/80R22.5				
							275/80R24.5				

Tread Width												
250	260	270	280	290	320	350	375	380	385	390	395	400
12/252	13	14		15	16.5	18						
Standard												
13.00R20				15R22.5	16.5R19.5	18R19.5						
14.00R20					15R22.5	18R22.5						
12.00R24					16.5R22.5							
Low Profile												
335/80R20	315/80R22.5	315/80R22.5	315/80R22.5	365/80R20	365/80R20	445/65R22.5	445/50R22.5	445/50R22.5	445/50R22.5*	445/50R22.5	445/50R22.5 ⁽¹⁾	445/50R22.5 ⁽¹⁾
365/80R20	305/75R24.5	305/75R24.5		385/65R22.5	385/65R22.5	445/65R19.5			455/55R22.5	455/55R22.5	455/55R22.5	455/55R22.5
305/70R22.5					425/65R22.5	445/50R22.5						
315/80R22.5						425/65R22.5						

* Bridgestone® Greatec®

RETREAD TREAD DESIGNS

X ONE® RETREADS

X One® XDA® Pre-Mold™ Retread

- Unique fuel efficient* compound, to help contribute to greater fuel savings
- Deep tread depth offering long tread life and excellent all-weather traction
- 24/32nds tread depth



LH R O/O U

Width	Tread Depth
380 mm	24/32"
390 mm	24/32"
Tread Depth	
Bandag® BDR-UWB	24
Goodyear®	N/A

X One® XDA-HT™ Pre-Mold™ Retread

- Aggressive lug-type tread design
- Increased traction
- Increased tread wear
- Optimized for Regional and Line Haul operations
- Deep 26/32nds tread depth
- Cool Running compound

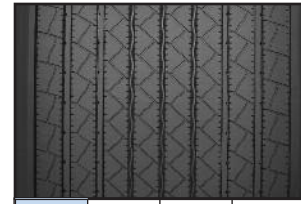


LH R O/O U

Width	Tread Depth
390 mm	26/32"
400 mm	26/32"
Tread Depth	
Bandag® BDR-UWB	24
Goodyear®	N/A

X One® XTA® Pre-Mold™ Retread

- Tread design to optimized to promote stability and resistance to uneven wear
- Fuel-efficient* Advanced Technology™ compound
- Tapered tread extensions to help withstand the stress of long haul trailer use
- 13/32nds tread depth



LH R O/O U

Width	Tread Depth
375/425 mm ⁽¹⁾	13/32
Tread Depth	
Bandag® BTR-UWB	24
Goodyear®	N/A

X One® XTE® Pre-Mold™ Retread

- Tread design optimized to promote stability and resistance to uneven wear
- Scrub-resistant compound for regional operations
- Tapered tread extensions to help withstand the stress of regional trailer use
- 16/32nds tread depth

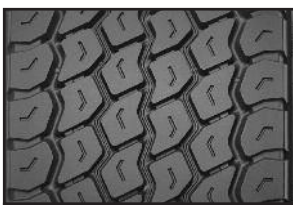


LH R O/O U

Width	Tread Depth
375/425 mm ⁽¹⁾	16/32"
385/435 mm ⁽¹⁾	16/32"
Tread Depth	
Bandag® BRR-UWB	24
Goodyear®	N/A

X One® XZU®S Pre-Mold™ Retread

- Co-Ex technology, unique two layer compound designed to minimize casing temperature for longer casing life
- Enhanced protection against stone drilling from variable pitch groove walls and groove bottom protectors in all grooves
- Tread design optimized for all weather traction; 23/32nds tread depth



LH R O/O U

Width	Tread Depth
390/430 mm ⁽¹⁾	23/32"
Tread Depth	
Bandag®	N/A
Goodyear®	N/A

* Fuel savings are estimates based on comparative rolling resistance. Actual on-road savings may vary.

(1) Tread widths with two measurements have wings. The first number is tread base width in mm. The second number is the overall width, wing tip to tip.

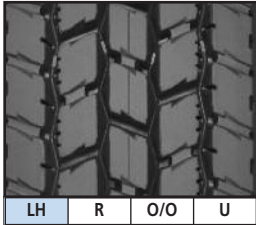
LH – Long Haul, R – Regional, O/O – On/Off Road, U – Urban

RETREAD TREAD DESIGNS

DRIVE POSITION RETREADS

XDA2® 19 and XDA2® 23 Pre-Mold™ Retread

- Fuel-efficient* Advanced Technology™ compound
- No compromise performance
- Modified tread block design optimized for long, even wear
- XDA2® 19 - 19/32nds tread depth and XDA2® 23 - 23/32nds tread depth
- XDA2® 23 - also available as a Custom Mold™ retread

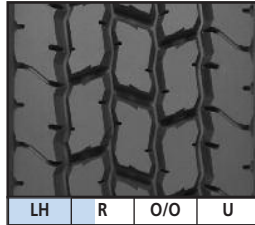


LH R O/O U

Width mm\inch	XDA2 19 Tread Depth	XDA2 23 Tread Depth
211 \ 8.5	—	23/32"
219 \ 9.0	19/32"	23/32"
225 \ 9.5	19/32"	23/32"
232 \ 10.0	—	23/32"
Tread Depth		
Bandag® FuelTech® Drive		24
Goodyear® G362™		26

XDA-HT™ High Torque™ Pre-Mold™ Retread

- Unique two compound design to help deliver long mileage and to help minimize internal casing temperatures
- Solid shoulder design optimized for long, smooth wear
- Open lug design helps provide excellent traction in adverse conditions
- 28/32nds tread depth



LH R O/O U

Width	Tread Depth	
200 mm	28/32"	
210 mm	28/32"	
220 mm	28/32"	
230 mm	28/32"	
240 mm	28/32"	
Tread Depth		
Bandag® MegaTrek™		26
Goodyear® G338™		27

XD4® Pre-Mold™ Retread

- Extra deep tread design optimized for high torque applications e.g. 4x2's
- Open shoulder design helps deliver exceptional traction
- 28/32nds tread depth
- Unique scrub resistant compound
- Also available as a Custom Mold™ retread



LH R O/O U

Width	Tread Depth	
210 mm	28/32"	
220 mm	28/32"	
230 mm	28/32"	
Tread Depth		
Bandag® BDR-HT		28
Goodyear® G603®		20

XDN®2 Pre-Mold™ Retread

- Exclusive, unique two-layer compound designed to minimize internal casing temperatures for longer tread & casing life
- Outstanding winter and wet traction utilizing Matrix™ Siping technology
- Wide open shoulder grooves help deliver traction without compromising tread life
- 27/32nds tread depth

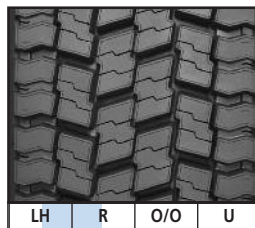


LH R O/O U

Width	Tread Depth	
220 mm	27/32"	
230 mm	27/32"	
240 mm	27/32"	
Tread Depth		
Bandag® MegaTrek™		26
Goodyear® G603®		20

XDN® Pre-Mold™ Retread

- Excellent traction levels in snow and ice conditions
- Sipes and lateral inter-locking grooves for rain and snow evacuation
- Excellent mileage
- Square shoulder for stability
- 26/32nds or 25/32nds tread depth – depending on tread width
- Also available as a Custom Mold™ retread

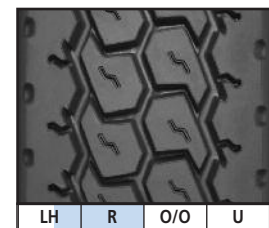


LH R O/O U

Width	Tread Depth	
180 mm	17/32"	
210 mm	26/32"	
220 mm	26/32"	
230 mm	26/32"	
250 mm	26/32"	
Tread Depth		
Bandag® ECL™ DSN III		21
Goodyear® G603®		20

XDHT® Pre-Mold™ Retread

- Solid shoulder design optimized for high scrub applications
- Block design optimized for high torque applications
- 19/32nds or 23/32nds tread depth – depending on tread width
- Available siped
- Also available as a Custom Mold™ retread



LH R O/O U

Width - mm\inch	Tread Depth	
180 mm	19/32"	
194 \ 7.0	23/32"	
203 \ 8.0	23/32"	
211 \ 8.5	23/32"	
219 \ 9.0	23/32"	
225 \ 9.5	23/32"	
232 \ 10.0	23/32"	
Tread Depth		
Bandag® D4300®		22
Goodyear® G167™		22

* Fuel savings are estimates based on comparative rolling resistance. Actual on-road savings may vary.
LH – Long Haul, R – Regional, O/O – On/Off Road, U – Urban

RETREAD TREAD DESIGNS

DRIVE POSITION RETREADS

XDA® Pre-Mold™ Retread

- Square shoulder for stability
- Slow, even wear
- Excellent mileage
- 25/32nds tread depth

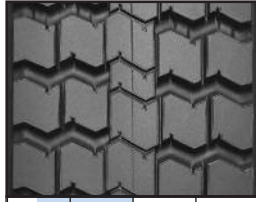


LH R O/O U

Width	Tread Depth
260 mm	25/32"
Tread Depth	
Bandag® ECL™ Drive	22
Goodyear® G305® LHD™	24

XDC® 18 & XDC® 22 Pre-Mold™ Retread

- Open shoulder design optimized for exceptional traction
- Solid center rib promotes long, even wear
- Classic drive axle design helps deliver excellent wear and traction
- XDC® 18 – 18/32nds tread depth and XDC® 22 – 22/32nds tread depth

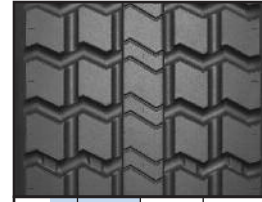


LH R O/O U

Width mm\inch	XDC 18 Tread Depth	XDC 22 Tread Depth
194 \ 7.0	—	22/32"
203 \ 8.0	—	22/32"
211 \ 8.5	—	22/32"
219 \ 9.0	18/32"	22/32"
225 \ 9.5	18/32"	22/32"
Tread Depth		
Bandag® D4310®	22/24	
Goodyear® G302 ESD®	22	

XDC® LL Pre-Mold™ Retread

- Designed for trade-in vehicles
- Meets truck manufacturers trade-in requirements
- 14/32nds tread depth



LH R O/O U

Width	Tread Depth
210 mm	14/32"
220 mm	14/32"
Tread Depth	
Bandag® BTT™	16
Goodyear® G302 ESD®	22

XM+S4® Pre-Mold™ Retread

- Standard highway compound
- Open lug tread design promotes self-cleaning of lugs and helps maximize mud and snow traction
- Chevron block design for high traction and low noise
- 21/32nds tread depth

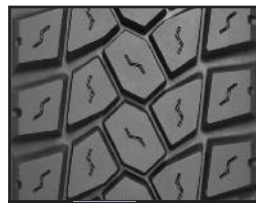


LH R O/O U

Width mm\inch	Tread Depth	Width mm\inch	Tread Depth
168 \ 5.0	21/32"	211 \ 8.5	21/32"
177 \ 6.0	21/32"	219 \ 9.0	21/32"
194 \ 7.0	21/32"	225 \ 9.5	21/32"
203 \ 8.0	21/32"		
Tread Depth			
Bandag® Gripper		22	
Goodyear® G558™		25	

XDE® M/S Pre-Mold™ Retread

- Open shoulder tread design optimized to help deliver high traction while providing excellent treadwear
- Offset shoulder blocks help provide added traction in mud and soft soil conditions
- 18/32nds, 20/32nds, 22/32nds, or 26/32nds tread depth depending on tread width

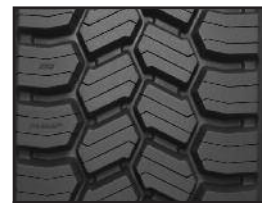


LH R O/O U

Width	Tread Depth	Width	Tread Depth
170 mm	18/32"	220 mm	22/32"
180 mm	18/32"	230 mm	22/32"
190 mm	20/32"	240 mm	26/32"
200 mm	20/32"	250 mm	26/32"
210 mm	20/32"		
Tread Depth			
Bandag® BDR-AS™		22	
Goodyear® G558™		25	

XDS® Pre-Mold™ Retread

- Unique Michelin compounding and tread siping to help deliver outstanding traction in severe snow conditions
- Extensive full-width sipes and lateral grooves for effective rain and snow evacuation
- Directional tread optimized for traction
- Also available as a Custom Mold™ retread
- 25/32nds tread depth



LH R O/O U

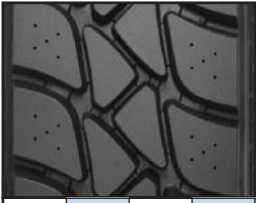
Width	Tread Depth
210 mm	25/32"
220 mm	25/32"
230 mm	25/32"
250 mm	25/32"
Tread Depth	
Bandag® BDR-W	23/27
Goodyear® G622 RSD®	22

RETREAD TREAD DESIGNS

DRIVE POSITION RETREADS

XDU® Pre-Mold™ Retread

- More rubber mass to aid in scrub resistance
- Exclusive, unique two-layer compound designed to minimize internal casing temperatures for long tread & casing life
- Proprietary compound specifically formulated for demanding, high scrub operations
- Lug design optimized for high scrub, high traction operations
- 32/32nds tread depth

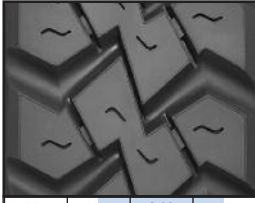


Width	Tread Depth
220 mm	32/32"
230 mm	32/32"
240 mm	32/32"
250 mm	32/32"
270 mm	32/32"

Tread Depth	
Bandag® BDM	26/30/32
Goodyear® Waste Hauler Lug	26/28/32

XDY® Pre-Mold™ Retread

- Compound for chip and cut resistance
- Deep tread for traction and mileage
- 26/32nds or 32/32nds tread depth depending on tread width

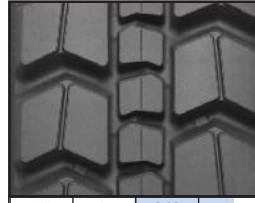


Width mm\inch	Tread Depth	Width mm\inch	Tread Depth
203 \ 8.0	26/32"	238 \ 10.5	26/32"
211 \ 8.5	26/32"	240 mm	32/32"
219 \ 9.0	26/32"	252 \ 12.0	32/32"
225 \ 9.5	26/32"		
232 \ 10.0	26/32"		

Tread Depth	
Bandag® WH Lug™	26/28/32
Goodyear® G282 MSD™	26

XDY-1™ Pre-Mold™ Retread

- Compound for chip and cut resistance
- Directional tread optimized for traction
- Extra deep tread for extra protection and mileage
- 30/32nds tread depth



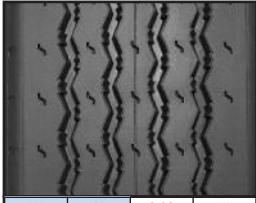
Width – mm\inch	Tread Depth
211 \ 8.5	30/32"
219 \ 9.0	30/32"
225 \ 9.5	30/32"
232 \ 10.0	30/32"
238 \ 10.5	30/32"

Tread Depth	
Bandag® BDY-1	30
Goodyear® G282 MSD™	26

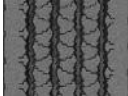
ALL-WHEEL POSITION RETREADS

XZA® Pre-Mold™ Retread

- Solid shoulder to help withstand scrub and abrasion
- Designed for long mileage and even wear
- Available siped
- Also available as a Custom Mold™ retread
- 13/32nds, 15/32nds or 20/32nds tread depth depending on tread width



* Tread design below available in the 240 mm - 20/32" width only.




Width	Tread Depth	Width mm\inch	Tread Depth
140 mm	13/32"	194 \ 7.0	15/32"
150 mm	13/32"	203 \ 8.0	15/32"
160 mm	13/32"	211 \ 8.5	15/32"
170 mm	13/32"	219 \ 9.0	15/32"
180 mm	13/32"	225 \ 9.5	15/32"
*240 mm	20/32"		

Tread Depth	
Bandag® FCR™ Rib	16
Goodyear® G159™	16

XZE® SA Pre-Mold™ Retread

- Rounded shoulders to help minimize scrub effects typical of spread axle applications
- Tapered tread extensions to help withstand shifting footprint stress typical of spread axle applications while helping to maintain casing durability
- 18/32nds tread depth




Width	Tread Depth
185/225 mm ⁽¹⁾	18/32"
195/235 mm ⁽¹⁾	18/32"
205/245 mm ⁽¹⁾	18/32"
215/255 mm ⁽¹⁾	18/32"
225/265 mm ⁽¹⁾	18/32"
245/285 mm ^(1, 2)	18/32"

Tread Depth	
Bandag® BTL-SA™	16
Goodyear® G319 SA™	16

XZE® Pre-Mold™ Retread

- Solid shoulders to help withstand scrub and abrasion
- Deep siping for optimized traction
- Deep tread depth designed for long mileage
- Available siped
- Also available as a Custom Mold™ retread
- 16/32nds or 18/32nds tread depth depending on tread width



Width mm\inch	Tread Depth	Width mm\inch	Tread Depth
168 \ 5.0	16/32"	211 \ 8.5	18/32"
177 \ 6.0	18/32"	219 \ 9.0	18/32"
194 \ 7.0	18/32"	225 \ 9.5	18/32"
203 \ 8.0	18/32"		

Tread Depth	
Bandag® Ultra All-Position™	18
Goodyear® G647 RSS®	16

(1) Tread widths with two measurements have wings. The first number is tread base width in mm. The second number is the overall width, wing tip to tip.

(2) Available 1st quarter 2010.

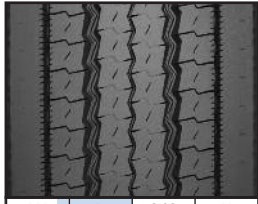
LH – Long Haul, R – Regional, O/O – On/Off Road, U – Urban

RETREAD TREAD DESIGNS

ALL-WHEEL POSITION RETREADS

XZE2™ Pre-Mold™ Retread

- Good traction
- Compound optimized for regional and over-the-road operations
- Center grooves for good water evacuation
- Performs well in both high scrub and low scrub conditions
- 20/32nds tread depth

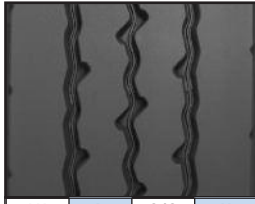


LH R O/O U

Width	Tread Depth
240 mm	20/32"
250 mm	20/32"
260 mm	20/32"
Tread Depth	
Bandag® Ultra All-Position™	18
Goodyear® G647 RSS®	16

XZU®S Pre-Mold™ Retread

- More rubber mass to aid in scrub resistance
- Exclusive, unique two-layer compound designed to minimize internal casing temperatures for long tread & casing life
- Proprietary compound specifically formulated for demanding, high scrub operations
- Rib design optimized for high scrub, medium traction operations
- 26/32nds tread depth

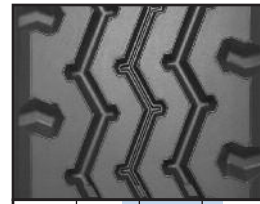


LH R O/O U

Width	Tread Depth
220 mm	26/32"
230 mm	26/32"
240 mm	26/32"
250 mm	26/32"
270 mm	26/32"
Tread Depth	
Bandag® BRM2™	26
Goodyear® G289 WHA™	26

XZY® Pre-Mold™ Retread

- Compound for chip and cut resistance
- Rib design optimized for quiet running and even wear
- All wheel position capable
- Shoulder scallops help provide additional traction
- 18/32nds or 20/32nds tread depth depending on tread width



LH R O/O U

Width mm\inch	Tread Depth	Width mm\inch	Tread Depth
203 \ 8.0	18/32"	232 \ 10.0	18/32"
211 \ 8.5	18/32"	238 \ 10.5	18/32"
219 \ 9.0	18/32"	250 mm	20/32"
225 \ 9.5	18/32"		
Tread Depth			
Bandag® RTP™			18/20
Goodyear® G186™			18

XZY-1™ Pre-Mold™ Retread

- Compound for chip and cut resistance
- Square shoulder helps increase ground contact
- All-wheel-position capable
- 20/32nds or 26/32nds tread depth depending on tread width



LH R O/O U

Width - mm\inch	Tread Depth
211 \ 8.5	20/32"
219 \ 9.0	20/32"
225 \ 9.5	20/32"
232 \ 10.0	20/32"
238 \ 10.5	20/32"
252 \ 12.0	26/32"
Tread Depth	
Bandag® BRX™	22
Goodyear® G186™	18

XZY-2™ Pre-Mold™ Retread

- Compound for chip and cut resistance
- Square buttressed shoulder helps provide impact protection from road hazards
- Zig zag tread grooves and shoulder traction scallops help enhance traction in virtually all weather conditions
- 26/32nds tread depth



LH R O/O U

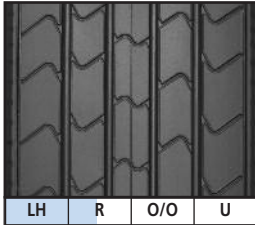
Width	Tread Depth
210 mm	26/32"
220 mm	26/32"
230 mm	26/32"
240 mm	26/32"
250 mm	26/32"
Tread Depth	
Bandag® WH Rib™	24
Goodyear® G286™	18/22

RETREAD TREAD DESIGNS

TRAILER POSITION RETREADS

XT-1® AT Pre-Mold™ Retread

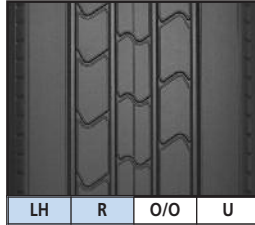
- Fuel efficient* Advanced Technology™ compound
- No Compromise performance
- 12/32nds tread depth
- Available siped
- Also available as a Custom Mold™ retread



Width - mm\inch	Tread Depth
203 \ 8.0	12/32"
211 \ 8.5	12/32"
219 \ 9.0	12/32"
225 \ 9.5	12/32"
Tread Depth	
Bandag® FuelTech Trailer®	12
Goodyear® G316® LHT™	12

XTA®-1 Pre-Mold™ Retread

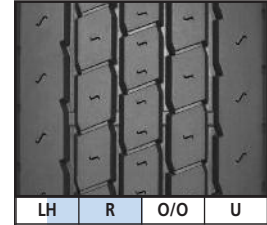
- Solid shoulder to withstand most scrub and abrasion
- No compromise performance
- 11/32nds tread depth
- Available siped
- Also available as a Custom Mold™ retread



Width - mm\inch	Tread Depth
194 \ 7.0	11/32"
203 \ 8.0	11/32"
211 \ 8.5	11/32"
219 \ 9.0	11/32"
225 \ 9.5	11/32"
240 \ 10.5	11/32"
Tread Depth	
Bandag® FCR™ Trailer	11
Goodyear® G314™	12

XTA® Pre-Mold™ Retread

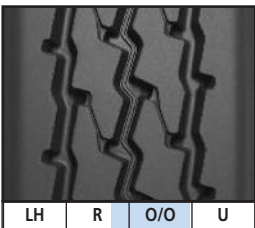
- Excellent stability
- Good resistance in high scrub operations
- 16/32nds tread depth



Width	Tread Depth
240 mm	16/32"
260 mm	16/32"
Tread Depth	
Bandag® ECL™ Trailer	14
Goodyear® G159™ HS	12

XTY® SA Pre-Mold™ Retread

- Application specific compound for chip and cut resistance
- Tapered tread extensions to help withstand shifting footprint stress typical of spread axle and multi-axle applications
- Aggressive tread design for demanding regional and on/off road trailer operations
- 22/32nds tread depth



Width	Tread Depth
195/235 mm ⁽¹⁾	22/32"
205/245 mm ⁽¹⁾	22/32"
215/255 mm ⁽¹⁾	22/32"
Tread Depth	
Bandag® ECL™ SST	15
Goodyear® G119 SA®	16

* Fuel savings are estimates based on comparative rolling resistance. Actual on-road savings may vary.

(1) Tread widths with two measurements have wings. The first number is tread base width in mm. The second number is the overall width, wing tip to tip.

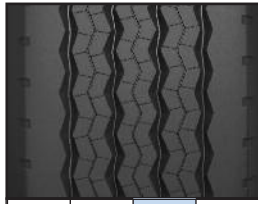
LH – Long Haul, R – Regional, O/O – On/Off Road, U – Urban

RETREAD TREAD DESIGNS

WIDE BASE RETREADS

XTE2® WIDE BASE Pre-Mold™ Retread

- Wide grooves help provide exceptional water evacuation
- Wide shoulder rib to help resist scrub and abrasion
- Tapered tread extensions to help withstand shifting footprint stress typical of wide base service
- 20/32nds tread depth

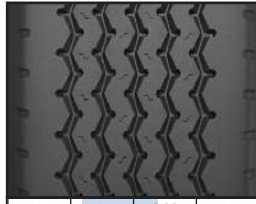


LH R O/O U

Width	Tread Depth
290/345 mm ⁽¹⁾	20/32"
Tread Depth	
Bandag® Wide Base Rib	16
Goodyear® Precure Wide Base Rib	16

XZA® WIDE BASE Pre-Mold™ Retread

- Wide shoulder rib to help withstand scrub and abrasion
- Tapered tread extensions to help withstand shifting footprint stress typical of wide base service
- 19/32nds tread depth

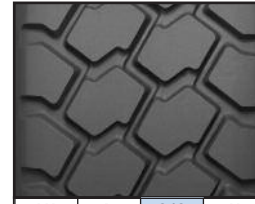


LH R O/O U

Width	Tread Depth
290/345 mm ⁽¹⁾	19/32"
320/365 mm ⁽¹⁾	19/32"
350/395 mm ⁽¹⁾	19/32"
Tread Depth	
Bandag® Wide Base Rib	16
Goodyear® Precure Wide Base Rib	16

XZH® WIDE BASE Pre-Mold™ Retread

- Compound for abrasion-resistance
- Self-cleaning lugs, open shoulder design for exceptional traction and excellent floatation
- Tapered tread extensions to help withstand shifting footprint stress typical of wide base service
- 20/32nds tread depth



LH R O/O U

Width	Tread Depth
350/395 mm ⁽¹⁾	20/32"
Tread Depth	
Bandag® Wide Base Lug	18
Goodyear® Precure Wide Base Lug	22

XZL™ WIDE BASE Pre-Mold™ Retread

- Co-Ex technology, unique two-layer compound designed to minimize internal casing temperature for longer tread and casing life
- Wing tread design for added protection on the shoulders for high scrub applications
- 30/32nds tread depth



LH R O/O U

Width	Tread Depth
350/395 mm ⁽¹⁾	30/32"
Tread Depth	
Bandag® WBSS™	30
Goodyear® G178™	27

XZY® WIDE BASE Pre-Mold™ Retread

- Compound for abrasion-resistance to promote long casing and tread life
- Tapered tread extensions to help withstand shifting footprint stress typical of wide base service
- 20/32nds tread depth



LH R O/O U

Width	Tread Depth
290/345 mm ⁽¹⁾	20/32"
320/365 mm ⁽¹⁾	20/32"
Tread Depth	
Bandag® WBD-A™	25
Goodyear® G178™	27

(1) Tread widths with two measurements have wings. The first number is tread base width in mm. The second number is the overall width, wing tip to tip.
LH – Long Haul, R – Regional, O/O – On/Off Road, U – Urban

RECOMMENDED BUFFING SPECIFICATIONS

SCULP	SIZE	LR	BUFF RADIUS ⁽¹⁾ mm	BUFF WIDTH ⁽²⁾ mm	OPT BUFF WIDTH
X [®] Coach XZ	295/80R22.5	J	675	230	225
X One [®] XDA [®]	445/50R22.5	L	1700	380	
X One [®] XDA [®] ENERGY	445/50R22.5	L	1700	380	
X One [®] XDA-HT [™]	445/50R22.5	L	1700	380	
	455/55R22.5	L	1700	390	
X One [®] XDN [®] 2	445/50R22.5	L	1700	380	
X One [®] XTA [®]	445/50R22.5	L	1700	380	
X One [®] XTE [®]	445/50R22.5	L	1700	380	
	455/55R22.5 *	L	1700	390	
X One [®] XZU [®] S	455/55R22.5	M	1700	390	
X One [®] XZY [®] 3	455/55R22.5	M	1700	390	
XCA [®]	7.5R17	D	300	140	
XD2 [®]	285/70R19.5	H	750	225	219
	255/70R22.5	H	850	211	203
XD4 [®]	11R22.5	G	675	230	225
	275/80R22.5	G	675	230	225
	275/80R24.5	G	675	230	225
XDA [®] ENERGY	275/80R22.5	G	675	230	225
XDA3 [®]	11R22.5	G	675	230	225
	275/80R22.5	G	675	230	225
	11R24.5	G	675	230	225
XDA5 [®]	11R22.5	G	675	240	225
	11R22.5	H	675	240	225
	12R22.5	H	675	252	250
	275/80R22.5	G	675	240	225
	11R24.5	G	675	230	225
	11R24.5	H	675	230	225
	275/80R24.5	G	675	240	225
XDA-HT [™]	11R22.5	G	675	230	225
	275/80R22.5	G	675	230	225
	275/80R24.5	G	675	230	225
XDE [®] A/T	11R22.5	H	675	230	225
	12R22.5	H	675	230	225
	11R24.5	H	675	225	219
XDE [®] M/S	225/70R19.5	F	500	194	177
	225/70R19.5	G	500	194	177
	245/70R19.5	H	1000	212	203
	9R22.5	F	550	168	152
	10R22.5	F	675	203	194
	10R22.5	G	675	203	194
	11R22.5	G	675	230	225
	11R22.5 *	H	675	230	225
	235/80R22.5	G	550	194	177
	255/80R22.5	G	600	203	194
	275/80R22.5	G	675	230	225
	11R24.5	G	675	230	225
11R24.5 *	H	675	230	225	
XDE [®] 1	215/75R17.5	F	525	177	168
XDE [®] 2+	265/70R19.5	G	550	194	177
	285/70R19.5	H	750	225	219
XDHT [™]	11R22.5	G	675	230	225
	275/80R22.5	G	675	230	225
	11R24.5	G	675	230	225
	275/80R24.5	G	675	230	225
XDL [®]	12.00R24	J	675	225	219
XDN [®] GRIP	315/80R22.5	L	700		
XDN [®] 2	11R22.5	G	675	240	225
	11R22.5	H	675	240	225
	12R22.5	H	675	252	250
	275/80R22.5	G	675	240	225
	11R24.5	G	675	230	225
	11R24.5	H	675	230	225
	275/80R24.5	G	675	230	225

SCULP	SIZE	LR	BUFF RADIUS ⁽¹⁾ mm	BUFF WIDTH ⁽²⁾ mm	OPT BUFF WIDTH
XDN [®] 2 GRIP	315/80R22.5	L	700	240	238
XDS [®]	11R22.5	H	675	230	225
	12R22.5	H	675	230	225
	11R24.5	H	675	230	225
XDS [®] 2	225/70R19.5	F	500	194	177
	225/70R19.5	G	500	194	177
	245/70R19.5	H	1000	203	194
	11R22.5	H	675	230	225
	11R24.5	H	675	230	225
XDY [®] 3	11R22.5	G	675	230	225
	315/80R22.5	L	700	240	238
	11R24.5	H	675	230	225
	12R24.5	H	1000		
XDY-2 [™]	11R22.5	H	675	230	225
	11R24.5	H	675	230	225
XDY-EX [™]	11R24.5	H	675	230	225
XFE [®] (Wide Base) (Steer)	385/65R22.5	L	1400	286	
	425/65R22.5	L	1400	318	290
	445/65R22.5	M	1000	340	320
XRV [®]	225/70R19.5	F	500	194	177
	245/70R19.5	F	1000	193	177
	235/80R22.5	G	550	194	177
	255/80R22.5	G	600	203	194
XT-1 [®]	11R22.5	G	675	230	225
	275/80R22.5	G	675	230	225
	11R24.5	G	675	230	225
	275/80R24.5	G	675	230	225
XTA [®]	10.00R15	J	450	177	168
	7.50R15	H	450	152	140
	8.25R15	H	450	152	140
	215/75R17.5	J	525	177	168
XTA [®] ENERGY	275/80R22.5	G	675	230	225
XTA [®] 2 ENERGY	245/70R17.5	J	650	203	194
	265/70R19.5	J	500	194	177
XTE [®]	11R22.5	G	675	230	225
	275/80R22.5	G	675	230	225
	11R24.5	G	675	230	225
	275/80R24.5	G	675	230	225
XTE2 [®]	285/70R19.5	J	750	225	219
XTE2 [®] (Wide Base)	385/65R22.5	L	1400	286	
	425/65R22.5	L	1400	318	290
	445/65R22.5	L	1000	340	320
XTY [®] 2	275/70R22.5	J	850	225	219
XZ2 [®]	12R22.5	H	675	230	225
XZA [®]	10R17.5	G	500	168	152
	285/70R19.5	H	750	225	219
	305/70R19.5	J	950	238	232
	8R19.5	F	300	152	140
XZA [®] 1	315/80R22.5	L	700	240	238
XZA [®] -1+	11R22.5	G	675	230	225
	275/80R22.5	G	675	230	225
	11R24.5	G	675	230	225
	275/80R24.5	G	675	230	225
XZA [®] -1B	275/80R22.5	G	675	230	225
	11R24.5	G	675	230	225
	275/80R24.5	G	675	219	211
XZA2 [®]	11R22.5	G	675	230	225
	275/80R22.5	G	675	230	225
	11R24.5	G	675	230	225
	275/80R24.5	G	675	230	225

(1) Buff radius compliance does not automatically yield correct undertread amounts. Undertread should be controlled and measured.

(2) Buff width and tread base width are not necessarily the same. Tread base width markings in even 10 mm increments will measure the marked width. Tread base width classic markings with die sizes, e.g. 225 \ 9.5 will be slightly narrower than the mm number marked as it is the mold width, not the finished base width.

* With tread compound for chip and cut resistance.

RECOMMENDED BUFFING SPECIFICATIONS

SCULP	SIZE	LR	BUFF RADIUS ⁽¹⁾ mm	BUFF WIDTH ⁽²⁾ mm	OPT BUFF WIDTH
XZA2® Energy	275/70R22.5	J	850	225	219
	295/80R22.5	H	675	225	219
	315/80R22.5	L	700		
XZA3®	11R22.5	G	675	230	225
	11R22.5	H	675	230	225
	275/80R22.5	G	675	230	225
	275/80R22.5	H	675	230	225
	11R24.5	G	675	230	225
	275/80R24.5	G	675	230	225
XZA4®	G20 (14.00R20)	M	675	273	
XZE®	225/70R19.5	F	500	194	177
	225/70R19.5	G	500	194	177
	245/70R19.5	F	1000	210	203
	245/70R19.5	G	1000	210	203
	245/70R19.5	H	1000	211	203
	9R22.5	F	550	168	152
	10R22.5	F	675	203	194
	10R22.5	G	675	203	194
	11R22.5	G	675	230	225
	11R22.5	H	675	230	225
	12R22.5	H	675	230	225
	235/80R22.5	G	550	194	177
	255/70R22.5 *	H	850	211	194
	255/80R22.5	G	600	203	194
	275/80R22.5	G	675	230	225
	275/80R22.5	H	675	230	225
	11R24.5	G	675	230	225
	11R24.5	H	675	230	225
	275/80R24.5	G	675	230	225

(1) Buff radius compliance does not automatically yield correct undertread amounts. Undertread should be controlled and measured.

(2) Buff width and tread base width are not necessarily the same. Tread base width markings in even 10 mm increments will measure the marked width. Tread base width classic markings with die sizes, e.g. 225 \ 9.5 will be slightly narrower than the mm number marked as it is the mold width, not the finished base width.

* With tread compound for chip and cut resistance.

SCULP	SIZE	LR	BUFF RADIUS ⁽¹⁾ mm	BUFF WIDTH ⁽²⁾ mm	OPT BUFF WIDTH
XZE®1	215/75R17.5	F	525	177	168
XZE2™ (North American design)	11R22.5	G	675	230	225
	11R22.5	H	675	230	225
	275/80R22.5	G	675	230	225
	11R24.5	G	675	230	225
	11R24.5	H	675	230	225
XZE®2 (European design)	275/80R24.5	G	675	230	225
	215/75R17.5	G	525	177	168
	9.00R20	G	600	177	168
	10.00R20	H	600	219	216
XZE®2+	11.00R20	H	600	219	216
	12.00R20	J	675	230	225
	265/70R19.5	G	550	194	177
	285/70R19.5	H	750	225	219
XZL® (Wide Base)	275/70R22.5	J	850	225	219
	295/80R22.5	H	675	225	219
	425/65R22.5	L	1300	318	290
XZU® S	445/65R22.5	L	1200	365	320
XZU® S (Wide Base)	315/80R22.5	L	700	240	238
	425/65R22.5	L	1400	318	290
XZU®2	12R22.5	J	675	230	225
	275/70R22.5	J	850	225	219
XZU®3	11R22.5	H	675	230	220
XZY®	12.00R24	J	675	225	219
XZY® 3 (Wide Base)	12R22.5	H	675	230	225
	385/65R22.5	J	1300	286	
	425/65R22.5	L	1300	318	290
XZY-2™	445/65R22.5	L	1200	340	320
	11R22.5	H	675	230	225
	11R24.5	H	675	230	225
XZY®3	11R22.5	G	675	230	225
	11R22.5	H	675	230	225
	315/80R22.5	L	700	240	238
	11R24.5	G	675	230	225
	11R24.5	H	675	230	225



To learn more please contact your MICHELIN Sales Representative or visit www.michelintruck.com

To order more books, please call Promotional Fulfillment Center 1-800-677-3322, Option #2

Monday through Friday, 9 a.m. to 5 p.m. Eastern Time

United States

Michelin North America, Inc.
One Parkway South, Greenville, SC 29615
1-888-622-2306

Canada

Michelin North America (Canada), Inc.
3020 Avenue Jacques-Bureau, Laval, Quebec
H7P 6G2
1-888-871-4444

Mexico

Industrias Michelin, S.A. de C.V.
Av. 5 de febrero No. 2113-A, Fracc. Industrial
Benito Juarez, 7 6120, Querétaro, Qro. Mex-
ico
011 52 442 296 1600

An Equal Opportunity Employer

Copyright © 2010 Michelin North America, Inc. All rights reserved.

The Michelin Man is a registered trademark owned by Michelin North America, Inc.

MYL41642 (01/10)

